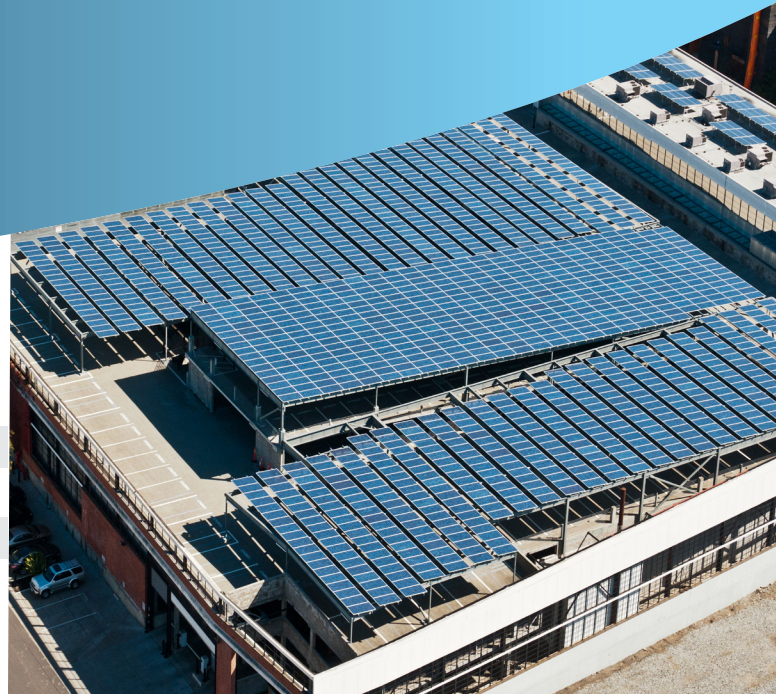


# CASE STUDY

## CLIF BAR AND COMPANY

### COMMERCIAL



PV System Size	531.6 kW DC
PV Equipment	1968 Suntech 270
Est. Production	722,073 kWh/year
Est. CO <sup>2</sup> Avoided	1,123,164 lbs/year
Est. Load Covered	85%

### THE PROJECT STORY – “GREEN CORRIDOR” VALUES

Longtime anchors of an East Bay region that actively supports green industries, SLP enthusiastically welcomed Clif Bar’s arrival as a fellow advocate for leadership in sustainable business. Both companies regularly win awards recognizing their commitments to the environment, the community, and their employees. Like a modern-day barn-raising with neighbors helping neighbors, Sun Light & Power’s deep expertise and close proximity to the new Clif Bar headquarters ensured the best solution with the lowest carbon footprint possible could be delivered.

*“This space is more than a headquarters; it’s a home to our inspiration and passion to do business in a better way.”*

*- Gary Erikson, Founder and Co-CEO, Clif Bar*

### THE SUN LIGHT & POWER SOLUTION

An innovative solution that included both rooftop and carport mounting of PV modules was carried out in three phases. In the end, the project boasted the largest SMART array in the nation and also includes live performance monitoring in the lobby. Tigo Energy Maximizers were installed on each of the 1,968 modules, and this technology is expected to generate 5-7% more power than a standard array. The module-level maximizers have the distinction of being the first distributed power electronics system to be deployed on a large commercial project in the US. SLP also built a custom steel superstructure for the parking arrays which have been featured in many publications, including Solar Home & Business Journal, Solar Pro Magazine, and Inhabitat.



1035 Folger Ave., Berkeley, CA 94710  
(510) 845-2997 or (800) 233-4SUN  
[www.sunlightandpower.com](http://www.sunlightandpower.com) License 326203



# CASE STUDY CLIF BAR AND COMPANY COMMERCIAL



*"We wanted to work with Sun Light & Power - they've been around the longest, and have done a great job."  
"It's possible to be profitable and sustainable at the same time."  
- Bruce Lymburn, General Counsel, Clif Bar*

## ENVIRONMENTAL BENEFITS

Every year this system removes the equivalent of 106 cars from the road, or prevents 57,114 gallons of gasoline from being burned. It would require 418 acres of forest to sequester this much CO2 annually.

## FINANCIAL BENEFITS

Clif Bar and Company's solar PV systems will provide clean energy and annual operating cost reduction from day one and will generate approximately \$145,925 in annual savings. With an expansive parking structure system as well as rooftop arrays built in three phases, this is a wise investment that will provide continuous returns.

## CUSTOMER PROFILE

Ten years ago, Clif Bar introduced the Five Aspirations (Sustaining our Business, Brands, People, Community, and Planet) and the company has been operating under this sustainable business model ever since. Equal attention to all five aspirations, rather than favoring one over another, has driven value across all areas of the company. Learn more at <http://www.clifbar.com/>



## SUN LIGHT & POWER PROFILE

Passionate people tend to get very good at what they do. With over 36 years of experience as a leader and pioneer in the solar industry, Sun Light & Power provides the highest possible design, engineering, and installation expertise for solar electric and thermal energy needs and places high value on lasting customer relationships.



1035 Folger Ave., Berkeley, CA 94710  
(510) 845-2997 or (800) 233-4SUN  
[www.sunlightandpower.com](http://www.sunlightandpower.com) License 326203

